



Reopening Plan Summary

Full Plan may be found at:

<https://jowonio.org/wp-content/uploads/2020/07/Jowonio-School-Reopening-Plan.pdf>

Our model - hybrid, with hope to phase in all students

- ★ The goal is that with careful planning, successful implementation of required safety measures, and continued low spread of COVID19 in our community, we will phase in all enrolled students to full day in school later in the year.

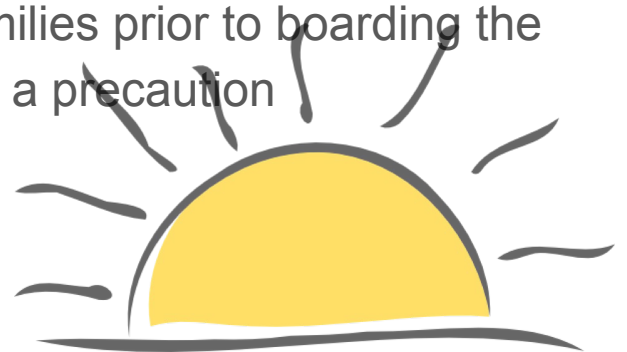
Initially:

- ★ Kids in ½ day rooms (Kangaroo/Bunny) attend regular hours
- ★ Kids in extended day rooms (Bumblebee/Butterfly) dismiss around 11:45 (SCIS kids stay until 1:00)
- ★ Kids in full day rooms (Treehouse/Star/Waterfall/Sunflower/Ocean/Rainforest/Earth) dismiss around 12:00 (SCIS kids stay until 2:30)
- ★ Specific staggered arrival and dismissal times are TBD
- ★ Staggered snack times will be offered for all kids, lunch for kids who stay until 1 or 2:30

Arrival

- ★ Start times will be staggered to avoid large groups and long lines (specific times TBD)
- ★ Families will park in the lot on their child's classroom's side of the building
- ★ Staff will screen children from their car by taking a touch free temperature and asking parents/guardians required screening questions
- ★ If child passes the screening (temperature below 100 and no "yes" answers), a staff member will escort them to their classroom
- ★ Children arrived on the bus will be screened by families prior to boarding the bus and temperatures will be taken upon arrival as a precaution

If you arrive past our designated arrival time, the front door will be used for entry and parent and child will be screened.



Dismissal

- ★ Dismissal times will be staggered with specifics TBD
- ★ Children who don't receive special education services in our SCIS program will be dismissed early (except for Bunny & Kangaroo) and brought to their designated pick up person in the parking lot closest to their classroom
- ★ Children receiving services in our SCIS program will be dismissed at the end of their regular day (11:15, 1:00 or 2:30). Teachers will bring them to their bus or to their designated pick up person in the parking lot closest to their classroom



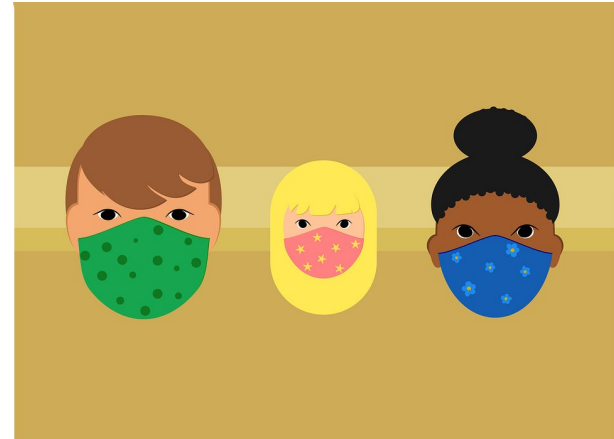
Face Masks

Teachers will wear masks when in the presence of children.

All kids who are at least 2 years of age, will be expected to wear masks (unless their special needs prohibit it), with mask breaks and support to increase endurance and comfort with it.

Parents can help by:

- Sending in several clean labeled face masks each day
- Practicing wearing face masks before the start of school
- Sharing social stories and songs about wearing masks
- Talking to staff if you have specific questions or concerns regarding your child's ability to safely wear a mask



Materials From Home

- Several changes of clothes to keep in storage bin at school
- Diapers if need
- Only snack/lunch, outerwear, and clean masks brought daily, and go directly into cubby
- No cloth backpacks
- No toys brought from home



Cleaning - Shared Spaces

- **Gym and Playground**
 - Frequently touched surfaces cleaned between groups
- **Secret Garden and Pooh Corner (Therapy spaces)**
 - Block scheduling/cohorts, “zones”
 - Kids from one cohort at a time in each zone
 - Equipment/materials used will be wiped down before bringing another cohort in



Physical Distancing

- Class size no more than 15 (starting with 13)
- Staggered start & dismissal times
- To allow spacing for meals, kids without IEPs dismissed early
- Markings for physical distancing in common spaces, hallway directionality, etc.
- Community room for staff use only
- Clear plastic/plexiglass barriers where impossible to distance adults



Physical distancing in the classroom

- Sensory and art materials in individual trays for each child – not shared
- Classrooms will primarily use washable toys and dolls and reduce the number of toys on shelves
- Additional stations with same materials will be spread out to discourage large groups of kids crowding together
- Meals – kids in designated spots/chairs 6 feet apart
- Singing/gross motor times – guidance says 12 feet apart
- Mouthed/soiled toys removed immediately and cleaned



Visitors

- Essential visitors only
 - Therapists from other agencies -must agree to our plan & submit their agency plan to us
 - Parents/guardians in rare circumstances
 - Minimal long term student teachers
- Must be screened prior to entry
- Wear masks
- Subject to physical distance protocol
- Parents, consider paying tuition online
- Log maintained of all visitors



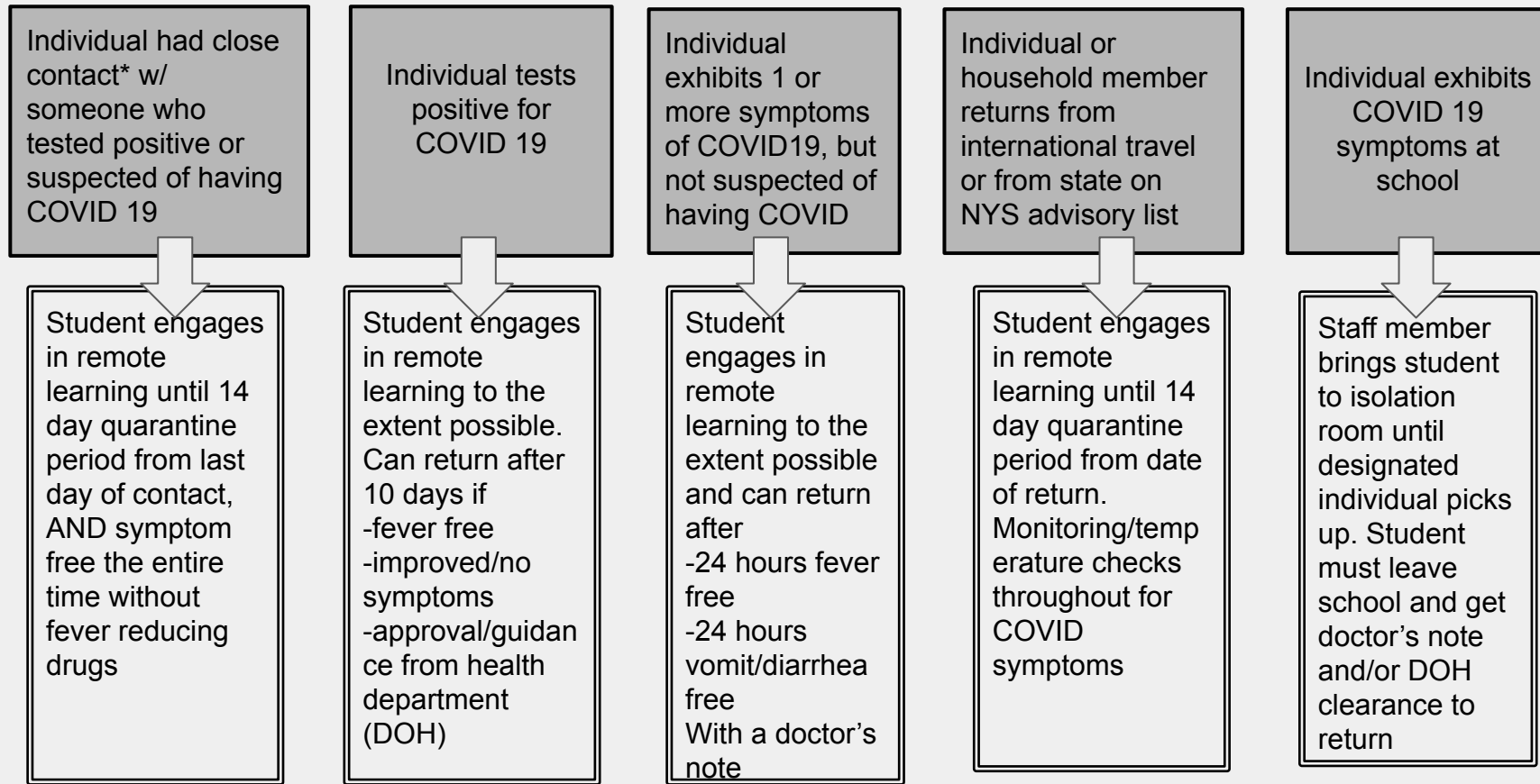
Not feeling well?

- If your child isn't feeling well or is exhibiting any symptoms of COVID19, please stay home!
- Visit the CDC's website for updated information regarding symptoms:
www.cdc.gov/coronavirus



For more guidance on our procedures in dealing with sick children, please see the Flowchart on the following page for complete explanations of our anticipated procedures. Keep in mind, our procedures are likely to be modified based on revised CDC/DOH guidelines

Return to school flowchart following a COVID-19 Related Absence (subject to change with evolving guidance)



*The CDC defines close contact as within 6 feet AND for 15 minutes or more. Masks are not a factor

Physicals & Immunizations



Per DOH and NYSED Guidelines:

- Physicals & Immunizations must be up to date in order to participate in school or through remote learning
- Please check with your pediatrician to confirm that your child has had a physical within **one year** of our start date of September 10th and that immunizations are up to date
 - If your child's physical and/or immunizations are not up to date please schedule an appointment **ASAP** and inform us of the scheduled appointment date

Remote Learning

Google Classroom

- Each classroom will have their own Google Classroom site
- Students will receive a school email address and password for access
- Hands on & play based activities will be sent home to supplement early dismissal while school is in-person
- Activities based on classroom curriculum/schedule
- Families can comment, share photos & videos on activities posted
- Parent training events will be offered

If another closure....

- Curriculum kits/bins sent home
- Virtual classroom get togethers
- Activities sent out daily on Google Classroom



Registration

Please let us know your intentions for the fall by filling out this registration form by August 7th [Registration Form](#)

- We can only guarantee the placement for which you have been already confirmed **BUT** we will gladly consider alternative placements, if current circumstances mean your plans have changed
- If your plans have changed please contact:
 - Emily Vercelloni (Emily.Vercelloni@jowonio.org) for children with special needs
 - Jen Petrie (Jennifer.Petrie@jowonio.org) for all others

Questions?

- ★ Please refer to our full reopening plan, which can be found at <https://jowonio.org/wp-content/uploads/2020/07/Jowonio-School-Reopening-Plan.pdf>.
- ★ Contact the school's director, Lori Saile at lori.saile@jowonio.org or 315-445-4010 x108

We are excited and ready to learn and play together with your children!

